

# ST GERARD'S PRIMARY SCHOOL NEWSLETTER



TERM 1 - WEEK 4

23 February, 2024



Embracing the spirit of Lent: A special moment at the Reconciliation Family Workshop last night. This week's 'Give Me 5' focus encourages us to Be Positive in the Learning Spaces, while the Gospel message guides us to turn our hearts to Jesus.

*Heavenly Father,*

*During this sacred Lenten season, we turn our hearts to You.*

*Guide us on a path of reflection, repentance, and spiritual renewal. May our thoughts, words, and actions be aligned with Your love and grace.*

*In turning towards You, grant us strength, wisdom, and the courage to follow the teachings of Your Son, Jesus Christ.*

*Amen.*



@st.gerards3175

Principal - Mr Paul Cowan  
principal@sgdandenongnth.catholic.edu.au  
71 Gladstone Road, Dandenong North 3175



<https://www.facebook.com/stgerardsp>

# PRINCIPAL'S MESSAGE

---

Dear Families,

We have had another week of interesting weather where we have experienced some very hot conditions. I would like to commend our children and staff on being able to negotiate the conditions and still maintain learning.

On Tuesday we had our **3 Way Conversations** which provided the opportunity for children, families and teachers to come together, share information and establish a partnership to best support the learning of our children. If families have not as yet met with their child(rens) teacher(s) please contact them to arrange a suitable time.

On Thursday we had our first **Ride / Walk to School Day** for the year. While we have a small group of children who walk or ride everyday, these days are always well supported. Despite a warm day, it was wonderful to see so many children start the day with some exercise.

Also on Thursday we had our **Reconciliation Family Workshop** for those children in Year 3 who are preparing for this wonderful sacrament of forgiveness. It is always inspiring to see families come together to share and develop their faith. I would also like to thank Mrs Stack, Ms Sonno, Mrs Lewis and Mrs Govic for leading and conducting this session. The children will celebrate their First Reconciliation on Thursday 14 March. Please keep them in your thoughts and prayers as they embark on this significant step in their faith journey.

Today (Friday) our **Year 3 - 6 classes** were involved in the second session of a **4 week cricket program**. This is proving to be a great chance to develop both sporting and social skills and is being enjoyed by all our children.

While on a sporting theme, a reminder about our **upcoming after school AUSKICK program which starts next Wednesday 28 February at 3.30pm**. Flyers about this program have been handed out and also sent to all families via Seesaw. This information is also on our Community Noticeboards and in this newsletter. We have had a steady flow of registrations particularly from our Foundation - Year 2 children. Please contact me if you have any questions or issues with registering.

Information was sent out this week **via Operoo about our Whole School Athletics Day which is on next Friday 1 March at Mentone Athletics Track**. This is always a fantastic day where our whole school is involved in athletic activities. Families are more than welcome to come along and be part of the fun. Also, if there are any adults that would like to help us with some of the activities/ events, please contact Mrs Wilson via Seesaw or email [twilson@sgdandenongnth.catholic.edu.au](mailto:twilson@sgdandenongnth.catholic.edu.au) as this really helps the day to run smoothly. **Please note that as part of our Child Safety Policies and Procedures all helpers require a Working With Children Check and need to have come to a Volunteer Induction Session.**

# PRINCIPAL'S MESSAGE....cont'd

---

As mentioned over the last few weeks, **our school gates are opened at 8.40am each morning. If children arrive or are dropped at school before this time there is a genuine safety concern as they are unsupervised and outside the school grounds.** Also when it is raining there is no shelter. Therefore I am asking families to drop their children off after 8.40am or wait with them until the gates are opened.

A final reminder to those families who have children with a **Medical Management Plan** that if there are changes or updates to any aspect of the plan or it has expired, you need to **contact the School Office and provide current documentation**. It is vital that the information we have here at school is current and accurate.

Lastly, we have the **first of our Open Days for Term 1 next Tuesday 27 February between 9.30am - 5.00pm**. This is an opportunity for prospective families to see all that we offer here at St Gerard's. We have 2 other Open Days planned for Wednesday 6 March and Thursday 14 March. If you know families who will be looking for a school in 2025, we would appreciate you letting them know of these dates.

Thank you for your continued support and God bless.

Paul Cowan  
PRINCIPAL



# Religious Education

## Whole School Mass:

## Level Mass:

1/2 Level:	29th February, 9:15am
Prep/5/6 Level:	7th March, 9:15am
3/4 Level:	14th March, 9:15am

## Reconciliation:

Year 5/6O:	Thursday, 14th March at 10:15
Year 4:	Thursday, 21st March at 10:15
Year 5/6 T:	Thursday, 29th February at 10:15am

## Sacrament Dates, 2024

### **First Reconciliation: (Grade 3)**

First Reconciliation:	Thursday 14th March, 6:30
-----------------------	---------------------------

### **First Communion: (Grade 4)**

First Communion Family Workshop:	Thursday 18th April, 6:30pm
First Communion:	Sunday 2nd June, 10:30am

### **Confirmation: (Grade 6)**

Confirmation Family Workshop Night:	Thursday 18th April, 7:30pm
Most Rev. Anthony J. Ireland Visits Yr 6:	Friday 31st May, 9:30am
Confirmation:	Saturday 1st June, 5:30pm

## Other Important Dates for Religion:

TBA:	Delegation of Yr 6 leaders attend St. Patrick's Day Mass at Cathedral
25th March onwards:	The Passion Prayer Spaces for student participation
28th March:	Holy Thursday
29th March:	Good Friday Day of Fast and Abstinence
30th March:	Holy Saturday
31st March:	Easter Sunday

# Religious Education

## Project Compassion

Caritas Australia's yearly Lenten campaign unites countless Australians in the global fight against poverty, championing justice, and upholding dignity. On Ash Wednesday, Project Compassion Boxes will be handed out to every class, each assigned a specific fundraising target for the Lenten season. The class that achieves the highest fundraising amount will enjoy a well-deserved free dress day as a reward! Stay informed about each class's progress in fundraising efforts through regular updates provided by the Social Justice Leadership Team during school assemblies.

## Altar Servers

Altar service practice will take place every Thursday evening at 5:30 pm in St. Gerard's Church. To be eligible for service, individuals must have completed their First Communion. This provides a wonderful opportunity for young members of the Church to participate in the liturgy and take on the responsibilities associated with altar service. For any inquiries regarding altar service practice or eligibility, please feel free to contact the parish office at 97924422.

## An Invitation to Bring Mary Home

An Invitation to Bring Mary Home: A Week of Family Spiritual Connection

We extend an invitation to families to bring the Our Lady statue into their homes for a week, enhancing their family prayer experience. A brochure containing instructions for engaging in rosary prayer, along with sets of rosary beads, will be provided. If you are interested in taking the Our Lady statue home, please let Mrs. Stack know.





# Religious Education

## Lunchtime Rosary

The Legion of Mary Group is collaborating with the school to lead the praying of the Rosary during lunch breaks. These sessions will be available during the first lunch on a Tuesday in weeks 4 and 8 in each term.

## The Passion Prayer Spaces

We're pleased to invite families to our Prayer Spaces starting March 25th. Each class will create a unique prayerful experience reflecting on The Passion through assigned Stations of the Cross.

Details:

- When: March 25th onwards
- Where: PAC Prayer Spaces

Come join us for a reflective journey and we look forward to sharing this meaningful time with you! More details to follow.

## Easter Prayer Spaces

Stay tuned for more information on the specific date and location of our Easter Prayer Spaces.

## FIRST WEEK OF LENT

Written by Michael McGirr



Genesis 9:8–15 | 1 Peter 3:18–22 | Mark 1:12–15

Mark's Gospel is bold and challenging. It doesn't beat around the bush. Throughout this year, there will be many Sundays when we really need to tune in because Mark's Gospel doesn't wait for the reader to be ready. It is right in your face, to use a modern expression. Sometimes Mark reminds us of the wise old person who doesn't use many words, but every one of those words counts. There can't be many books of so few pages that have had such a mighty impact on the world.

Today, a few lines tell us that Jesus went into the desert for 40 days and 'was tempted by Satan.' He was 'with the wild beasts', meaning he was vulnerable as he was immersed in the natural world. This was surely an experience of struggle and growth. Then suddenly Jesus discovers that John the Baptist has been arrested. In a few lines, Mark creates the impression of a challenging time.

How did Jesus respond? He seems to have been enlivened, to have decided to create change. He is full of energy and purpose. 'The time has come,' he says. In his vulnerability, he has discovered that 'the kingdom of God is close at hand.'

This year, through Project Compassion, Caritas Australia will ask us to consider several stories of vulnerability and hope in action. Over the coming weeks, we will meet a number of extraordinary women: Ronita from the Philippines, Leaia from Samoa and Memory from Malawi. They remind us that in many situations around the world, women are the heart of the community and the drivers of change. In each case, a partnership involving Caritas Australia and local agencies has led to new opportunities not just for an individual but for families and communities. The kingdom of God is, indeed, closer than we think. Together with Ronita, Leaia and Memory, our decisions help to bring it to reality around the globe.

Perhaps we might spend time with the words of today's Psalm: 'God guides me in the right path; God teaches the Lord's way to the poor.'



Memory collects water at her family village in Mwanza district, southern Malawi. Photo: Tim Lam/Caritas Australia

## PRAYER

We pray for all those around the world who are vulnerable to the impact of poverty, violence, and climate change. May our generosity towards Project Compassion be a measure of our commitment to global change.  
Amen

# WELLBEING

In primary school, some students **miss** on average **3 weeks** of school **per year**. That's **half a year** of school by the end of **year 6**.



## EVERY DAY COUNTS

### Primary school attendance

Going to school every day is the single most important part of your child's education. Students learn new things at school every day – missing school puts them behind.

#### Why it's important

We all want our students to get a great education, and the building blocks for a great education begin with students coming to school each and every day.

If students miss school regularly, they miss out on learning the fundamental skills that will set them up for success in the later years of school.

There is no safe number of days for missing school – each day a student misses puts them behind, and can affect their educational outcomes.

Each missed day is associated with progressively lower achievement in numeracy, writing and reading.

#### Getting in early

Attendance patterns are established early – a child regularly missing days in kindergarten or in the early years of school will often continue to miss classes in the later years, and receive lower test scores than their classmates. It's vital that students go to school every day – even in the early years of primary school.

#### What we can do

The main reasons for absence are:

**Sickness** – There are always times when students need to miss school, such as when they're ill. It's vital that they're only away on the days they are genuinely sick, and setting good sleep patterns, eating well and exercising regularly can make a big difference.

It's vital that holidays are planned during school holidays where possible, and not during the term if it can be avoided.

**"Day off"** – Think twice before letting your child have a "day off" as they could fall behind their classmates – every day counts.

**Truancy** – This is when students choose not to go to school without their parent's permission. There can be many reasons for truancy. The best way to address this is for schools and parents to work together.

If for any reason your child must miss school, there are things you can do with your school to ensure they don't fall behind:

- Speak with your classroom teacher and find out what work your child needs to do to keep up.

- Develop an absence learning plan with your teacher and ensure your child completes the plan.

Remember, every day counts. If your child must miss school, speak with your classroom teacher as early as possible.

Openly communicating with your child's school about all absences is a good way to prevent attendance issues being escalated to a School Attendance Officer. A School Attendance Officer is a Department of Education and Early Childhood Development Regional Director who has authority to follow up attendance issues. Attendance issues that are escalated can lead to an Infringement Notice.

If you're having attendance issues with your child, please let your classroom teacher know so we can work together to get your child to school every day.

**For more information and resources to help address attendance issues, visit:**

[www.education.vic.gov.au/school/parents/behaviour/Pages/studentattendance.aspx](http://www.education.vic.gov.au/school/parents/behaviour/Pages/studentattendance.aspx)

Department of Education and Training



Education  
and Training

# WELLBEING

---



- **Why is SEL important for learning?**

**Research shows that children and young people's learning is influenced by a range of social and emotional factors.**

- Children and young people with social and emotional learning skills have better academic outcomes, as well as improved physical health and a better quality of life. How well individuals do in their learning community is affected by things such as how:
  - confident they feel about their abilities
  - effectively they're able to manage their own behaviour
  - well they can concentrate and organise themselves
  - effectively they can solve problems
  - positively they can get on with educators and their peers
  - effectively they consider others' needs
  - well they can understand and accept responsibilities.
- Therefore, SEL and success within the learning community go hand in hand.



# WELLBEING

## WALK BIKE & ROLL TO SCHOOL

A big thank you to all of the families who participated in Ride to School Day on Thursday 22<sup>nd</sup> February.

Congratulations to 5/O who had the most students walking, scooting and riding to school!!

### Well done to:

1<sup>st</sup> place- 5/6O with 73% riding, scooting or walking

2<sup>nd</sup> place- 5/6T with 72% riding, scooting or walking

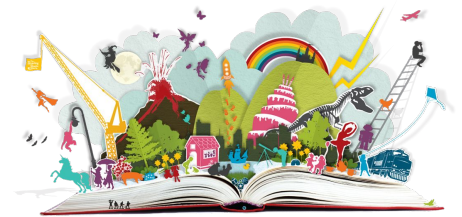
3<sup>rd</sup> place- 3/4SG with 61% riding, scooting or walking





# Literacy-Before School Reading

Every Wednesday Mornings Before School





Please note the following changes in relation to uniform purchases for St Gerard's Primary School:

Uniforms can now be purchased in the following ways:

**Option 1 - Online Order**

**Access to our Online Ordering System**

1. [www.aplusschoolwear.com.au](http://www.aplusschoolwear.com.au)
2. Go to **SHOP ONLINE NOW** (red box)
3. Select your school
4. Uniform listing with images will appear.

Select items you are wishing to purchase:

Style  
Size  
Colour  
Quantity  
Add items to bag

5. Once all items are added to bag, proceed to checkout.
6. Select delivery options
  - a. Pick up from school (free) in comments section please enter your child's name and class
  - b. Pick up from A Plus Schoolwear (free)
  - c. Postal address (delivery charges will apply)
7. Either checkout as guest, returning customer or create a new account.

**Orders placed by Sunday will be delivered to the school the following Thursday**

**Option 2 - Fill out the order form and leave it at the school office.**

**Orders received by Friday will be delivered to the school the following Thursday**

**RETURNS**

Can be given to the school office and will be either exchanged or refunded by A Plus School wear.

Should you have any queries regarding the above, please contact A Plus Schoolwear

9354 8345 or email [angie@agsprints.com.au](mailto:angie@agsprints.com.au)

# IMPORTANT DATES / NOTES

## ***February***

- 28th Foundation Rest Day
- 28th Reading before school in the library from 8:30am
- 28th AUSKICK (AFL) Week 1, 3:30pm - 4:30 pm
- 29th Year 1/2 Level Mass in the Church at 9:15am
- 29th Year 5/6T Reconciliation at school

## ***March***

- 1st St Gerard's Whole School Athletics Day at Mentone Athletics Track
- 6th Reading before school in the library from 8:30am
- 6th AUSKICK (AFL) Week 2, 3:30pm - 4:30 pm
- 7th Foundation and Year 5/6 Level Mass in the Church at 9:15am
- 7th Year 4 Reconciliation at school
- 7th First Reconciliation Reflection Day
- 11th Labour Day Public Holiday
- 13th - 25th NAPLAN Testing (Years 3 and 5)
- 13th Reading before school in the library from 8:30am
- 13th AUSKICK (AFL) Week 3, 3:30pm - 4:30 pm
- 14th Year 3/4 Level Mass in the Church at 9:15am
- 14th Year 5/6O Reconciliation at school
- 14th Sacrament of First Reconciliation at 6.30pm
- 19th Rosary in the Church at 11.05am
- 20th Reading before school in the library from 8:30am
- 20th AUSKICK (AFL) Week 4, 3:30pm - 4:30 pm
- 22nd National Ride to School Day
- 25th Holy Week/Easter Presentations start
- 27th Reading before school in the library from 8:30am
- SUBWAY
- 28th Holy Week/Easter Presentations conclude
- 28th End of Term 1 school finishes at 3.30pm



# IMPORTANT DATES / NOTES




## Medical Plans And Asthma Plans

Just a reminder to parents to provide the school with updated medical and asthma plans for 2024. If your child has asthma or requires other medications please supply ventolin, spacer and medications on the first day back to the school office.

All medications will be stored in individually labelled bags in the school office.


## Pick-up From After-School

Parents are asked to please be prompt when picking up your child/ren after-school. If a ride is not here when school concludes, the student may be sent to aftercare instead of the office. Please remember school aftercare does have a cost involved and time will begin accruing at the end of the school day. If a student's ride has run into an unexpected delay, please call the main office to let them know.




**come find your awesome**

**ST GERARD'S PS AUSKICK**  
St Gerard's Primary School  
Feb 28th - Mar 20th  
3:30pm - 4:30pm




[play.afl/auskick](http://play.afl/auskick)




## St Gerard's YLVOSHC

**Program Information**  
Service Phone Number: 0402 192 685



### Prices

<b>Before School Care</b>	
(Permanent)	\$15.00
(Casual)	\$20.00
After Max CCS:	\$2.89
<b>After School Care</b>	
(Permanent)	\$20.00
(Casual)	\$25.00
After Max CCS:	\$3.16
<b>Pupil Free Day and Vacation Care</b>	
(Permanent)	\$65.00
(Casual):	\$72.50
After Max CCS:	\$6.50



\* MAX CCS REBATE FIGURES ARE PROVIDED AS APPROXIMATES AND MAY VARY

[YLV.COM.AU](http://YLV.COM.AU)



# IMPORTANT DATES / NOTES

## Great Women of Faith

*Portrait Exhibition by Barbara Skorupa*



**1-10 MARCH 2024**

**ST PATRICK'S CATHEDRAL - 1 CATHEDRAL PLACE, EAST MELBOURNE**

### OPENING TIMES:

**FRIDAY 1 MARCH:**

9am-12 noon; 4-6pm

**SATURDAY 2 MARCH:**

9.30-11.30am; 1-2pm; 3-4pm; 5-6pm

**SUNDAY 3 MARCH:**

1-2pm; 3-4pm; 5-6pm

**MONDAY 4 MARCH - WED 6 MARCH (each day):**

9am to 12 noon; 2-5pm

**THURSDAY 7 MARCH:** 9am to 12 noon

**FRIDAY 8 MARCH:** 9am to 12 noon; 2-5pm

**SATURDAY 9 MARCH:** 9.30-11.30am; 1.30-3.30pm

**SUNDAY 10 MARCH:** 2-6pm

For updates and details: [www.maryglowreymuseum.info/Exhibition](http://www.maryglowreymuseum.info/Exhibition)

PRESENTED  
BY



CATHOLIC ARCHDIOCESE  
OF MELBOURNE



CATHOLIC WOMEN'S LEAGUE  
OF VICTORIA AND WAGGA WAGGA



SPONSORS



Melbourne Archdiocese  
Catholic Schools



Villa Maria  
Catholic  
Homes



# SCHOOL FEES

**The CSEF is provided by the Victorian Government to assist eligible families to cover the costs of school trips, camps and sporting activities.**

If you (not child) hold a valid means-tested concession card or are a temporary foster parent, you may be eligible for CSEF. The allowance is paid directly to the school to use only towards expenses relating to camps, excursions or sporting activities for the benefit of your child.

For concession card holders, CSEF eligibility will be subject to the parent/legal guardian's concession card being successfully validated with Centrelink.

Your child's school will apply for the CSEF on your behalf.

Parents or legal guardians are required to complete a **CSEF application form ([BELOW](#))** and lodge it with their child's school for processing.

Application forms should be completed and lodged with schools as soon as possible in Term One, as payments are made from March onwards. However, schools will be able to accept and process applications up until the end of Term Two each year.

# SCHOOL FEES



## Camps, Sports and Excursions Fund APPLICATION Form

School Name

School REF ID

### Parent/legal guardian details

Surname

First name

Address

Town/suburb  State  Postcode

Contact number

Centrelink pensioner concession **OR** Health care card number (CRN)

-  -  -  **OR**

☐ Foster parent\* **OR** ☐ Veterans affairs pensioner (Gold Card)\*\*

\*Foster Parents must provide a copy of the temporary care order letter from the Victorian Department of Families, Fairness and Housing (DFFH).

\*\*Applicants must provide a copy of the Veteran Affairs Gold card.

### Student details

Child's surname	Child's first name	Student ID	Date of birth (dd/mm/yyyy)	Year level

I authorise the Victorian Department of Education (DE) to use Centrelink Confirmation eServices to perform an enquiry about my Centrelink customer details and concession card status to enable the business to determine if I qualify for a concession, rebate or service. I also authorise the Victorian Department of Families, Fairness and Housing (DFFH) to provide the results of any enquiry to DE regarding temporary care orders.

I understand that:

- DFFH or Centrelink will use information I have provided to DE to confirm my eligibility for the Camps, Sports and Excursions Fund and will disclose to DE personal information including my name, address, payment and concession card type and status.
  - This consent, once signed, remains valid while my child is enrolled at a registered Victorian school unless I withdraw it by contacting the school.
  - I can obtain proof of my circumstances/details from DFFH and provide it to my child's school so that my eligibility for the Camps, Sports and Excursions Fund can be determined.
  - If I withdraw my consent or do not alternatively provide proof of my circumstances/details, I may not be eligible for the Camps, Sports and Excursions Fund provided by DE.
  - Information regarding my eligibility for the Camps, Sports and Excursions Fund may be disclosed to DFFH and/or State Schools Relief for the purpose of evaluating concession card services or confirming eligibility for assistance.
- You can request access to the personal information that we hold about you, and to request that any errors be corrected, by contacting your child's school.

Signature of applicant  Date  /  /

<https://www.education.vic.gov.au/PAL/CSEF-application-form.docx>

# SCHOOL FEES



## Camps, Sports and Excursions fund eligibility

Below are the criteria used to determine a student's eligibility for the Camps, Sports and Excursions Fund (CSEF).

### Criteria 1 – Eligibility

To be eligible\* for the fund, a mature minor of sixteen years of age or over, a parent or legal guardian of a student attending a registered Government or non-government Victorian primary or secondary school must:

- on the first day of Term one, or;
- on the first day of Term two.
- a) Be an eligible beneficiary within the meaning of the State Concessions Act 2004, that is, be a holder of Veterans Affairs Gold Card or be an eligible Centrelink Health Care Card (HCC) or Pensioner Concession Card (PCC) holder, OR
- b) Be a temporary foster parent, and;
- c) Submit an application to the school by the due date.

\* A special consideration eligibility category also exists. For more information, see: [Camps, Sports and Excursions Fund \(CSEF\): Eligibility | education.vic.gov.au](https://education.vic.gov.au/csef/eligibility)

Mature minors or parents who receive a Carer Allowance on behalf of a child, or any other benefit or allowance not income tested by Centrelink, are not eligible for the CSEF unless they also comply with one of (a) or (b) above.

### Criteria 2 - Be of school age and attend school in Victoria

School is compulsory for all Victorian children aged between six and seventeen years of age inclusive.

For the purposes of CSEF, students may be eligible for assistance if they attend a Victorian registered primary or secondary school. Typically, these students are aged between five and eighteen years inclusive.

CSEF is not payable to students attending pre-school, kindergarten, home schooling, or TAFE.

#### Eligibility Date

For concession card holders, CSEF eligibility will be subject to the parent/legal guardian's concession card being successfully validated with Centrelink on **29 January 2024 and/or 15 April 2024**.

## Payment amounts

### CSEF payment amount

The CSEF is an annual payment to the school to be used towards camps, sports and/or excursion expenses for the benefit of the eligible student.

- Primary school student rate: \$150.00 per year.
- Secondary school student rate: \$250.00 per year.

The CSEF is paid directly to the school and will be allocated by the school towards camps, sports and/or excursion costs for your child.

**For ungraded students**, the rate payable is determined by the student's date of birth. For more information, see: [Camps, Sports and Excursions Fund \(CSEF\): Payment amounts | education.vic.gov.au](https://education.vic.gov.au/csef/payment-amounts)

**Foundation and Year 7 government school students** who are CSEF recipients are also eligible for a uniform voucher. Schools are required to make applications on behalf of parents, so please register your interest at the school.

## How to complete the application form

**NOTE: ALL SECTIONS MUST BE COMPLETED BY PARENT/LEGAL GUARDIAN**

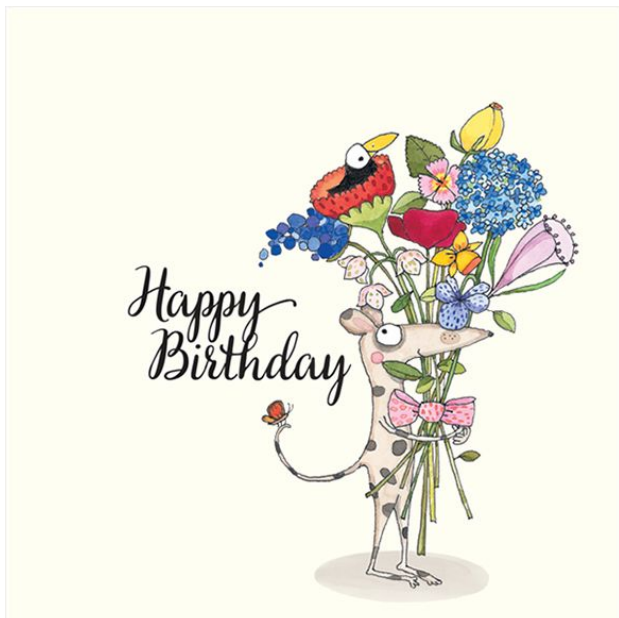
1. Complete the PARENT/LEGAL GUARDIAN DETAILS section.  
Make sure that the Surname, First Name, and Customer Reference Number (CRN) details match those on your concession card. You will also need to provide your concession card to the school.  
If you are claiming as a Foster Parent or a Veteran Affairs Pensioner, you will need to provide a copy of documentation confirming your status as a temporary Foster Parent or provide your Veterans Affairs Pensioner Gold card to the school.
2. Complete the STUDENT/S DETAILS section for students at this school.
3. Sign and date the form and return it to the school office as soon as possible. The CSEF program for 2024 closes at the end of term two 2024.

CSEF payments cannot be claimed retrospectively for prior years.

**Queries relating to CSEF eligibility and payments should be directed to the school.**



# Important Information



Happy Birthday to all who had celebrated and will celebrate their birthdays, this week and over the holidays.

- KAVYA Yr 6
- JORAM Yr 3



- *Every Day Counts* - Primary School Attendance Information
- Mazenod College Open Day Information
- Noble Park Community Fun Day
- Noble Park Junior Football Club (AFL)
- Ukraine Support Fund
- AFL Auskick
- Springvale Indoor Sports



## Chicken Eggs For Sale

- St Gerard's would like to offer families the opportunity to purchase delicious organic eggs laid by our resident flock of chickens.
- You can purchase these eggs from the school office at a cost of **\$7** per dozen.
- All proceeds from the sale of the eggs will go towards purchasing food for our feathered friends.
- Please message [Nicole Fernandez](#) via Seesaw if you would like to purchase some eggs.